

FACILITY PLANNING DATA	
ELECTRICAL INPUT	1 PH, 200-240 VAC 50/60Hz
POWER CONNECTION TYPE	HARDWIRED
FULL LOAD AMPS(FLA)	28.5
MINIMUM CIRCUIT AMPACITY (MCA)	41.75
MAXIMUM OVERCURRENT PROTECTION (MOP)	45
FEATURES/OPTIONS	
FAN TYPE	ELECTRICALLY COMMUTATED
MAXIMUM AIRFLOW -l/s(CFM)	5437 m ³ /h (3200 CFM)
FAN CONTROL	VARIABLE SPEED
NUMBER OF FANS	8
HOT SWAPPABLE FANS	YES
HOT AISLE /RACK AISLE CONTAINMENT COMPATIBLE	YES
REFRIGERANT TYPE	R410A
NETWORK MANAGEMENT CARD	INCLUDED
STANDARD FILTER TYPE	0.5-in. WASHABLE
STANDARD FILTER EFFICIENCY	MERV 1
OPTIONAL FILTER TYPE	2-in. PLEATED
OPTIONAL FILTER EFFICIENCY	MERV 8
DRAINAGE SYSTEM	GRAVITY DRAIN/ CONDENSATE PUMP
NUMBER OF RACK INLET TEMP SENSORS	1
PIPING CONNECTIONS	TOP OR BOTTOM
ELECTRICAL CONNECTIONS	TOP OR BOTTOM
CABLE TYPE WATER DETECTOR	OPTIONAL
ELECTRICAL REHEAT	YES
HUMIDIFICATION	YES

LIMIT WORKING CONDITIONS:

- REFRIGERANT TYPE : R410A
- VOLTAGE INPUT TOLERANCE : ±10%
- APPROXIMATE MINIMUM RECOMMENDED LOAD : 8kW (27297 BTU/hr)
- OUTDOOR AMBIENT TEMPERATURE WITHOUT THE LOW AMBIENT TEMPERATURE KIT INSTALLED:
DOWN TO -15°C(+5°F) UP TO 48°(118°F).
- OUTDOOR AMBIENT TEMPERATURE WITH THE LOW AMBIENT TEMPERATURE KIT INSTALLED:
DOWN TO -40°C(-40°F) UP TO 48°(118°F).
- AMBIENT %RH : 5 TO 80%RH
- ALTITUDE : 3000 METERS (9843 FEET).

NOTES:

- INSTALLATION SHALL COMPLY WITH ALL APPLICABLE NATIONAL, STATE AND LOCAL ELECTRICAL STANDARDS.
- REFER TO PRODUCT DOCUMENTATION FOR ADDITIONAL DETAILS PRIOR TO INSTALLATION AND SITE PREPARATION WORK.
- ALL DIMENSIONS ARE IN MILLIMETERS [INCHES].
- WHEN UNIT IS INSIDE THE ROW 900[36] REQUIRED FOR SERVICE ACCESS, WHEN OUTSIDE THE ROW 1200[48] REQUIRED FOR UNIT MOVEMENT. CHECK THE LOCAL AND NATIONAL CODES AND REGULATIONS FOR FURTHER SERVICE ACCESS REQUIREMENTS.
- SUCTION PIPE SHOWN WITHOUT INSULATION IN THIS SHEET.
- AVAILABLE PIPING CONFIGURATIONS: TOP OR BOTTOM.
- NET WEIGHT OF UNIT IS 173.5 kg [382.5 lb].
- THIS INFORMATION PROVIDES APPROXIMATE CENTER OF GRAVITY CALCULATION.

THIS DRAWING AND SPECIFICATIONS HEREIN ARE THE PROPERTY OF SCHNEIDER ELECTRIC AND SHALL NOT BE COPIED, REPRODUCED OR USED IN WHOLE OR IN PART, AS THE BASIS FOR THE MANUFACTURE OR SALE OF ITEMS WITHOUT WRITTEN PERMISSION FROM SCHNEIDER ELECTRIC. THIS DRAWING IS BASED UPON LATEST AVAILABLE INFORMATION AND IS SUBJECT TO CHANGE WITHOUT NOTICE.

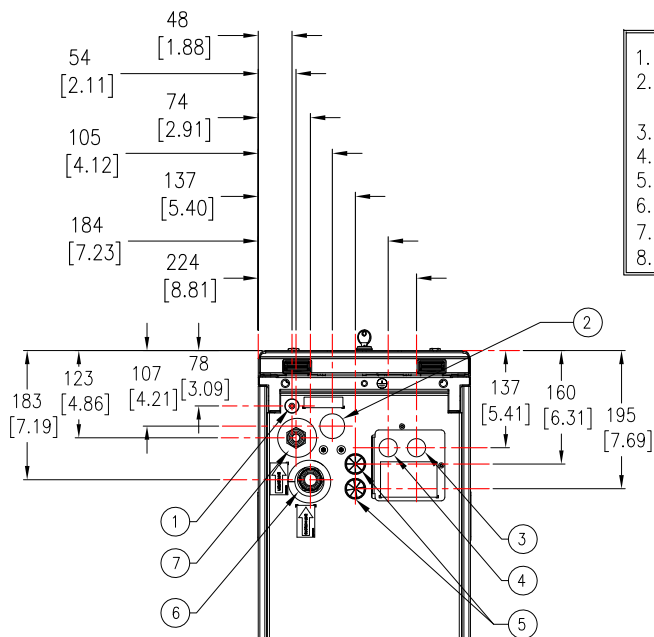
Schneider Electric

TITLE: InRow DIRECT EXPANSION
InRow RD 300mm 30kW Indoor Unit
DUAL FEED 208-230V, w/HUMIDIFIER & REHEAT CE/UL
GENERAL ARRANGEMENT

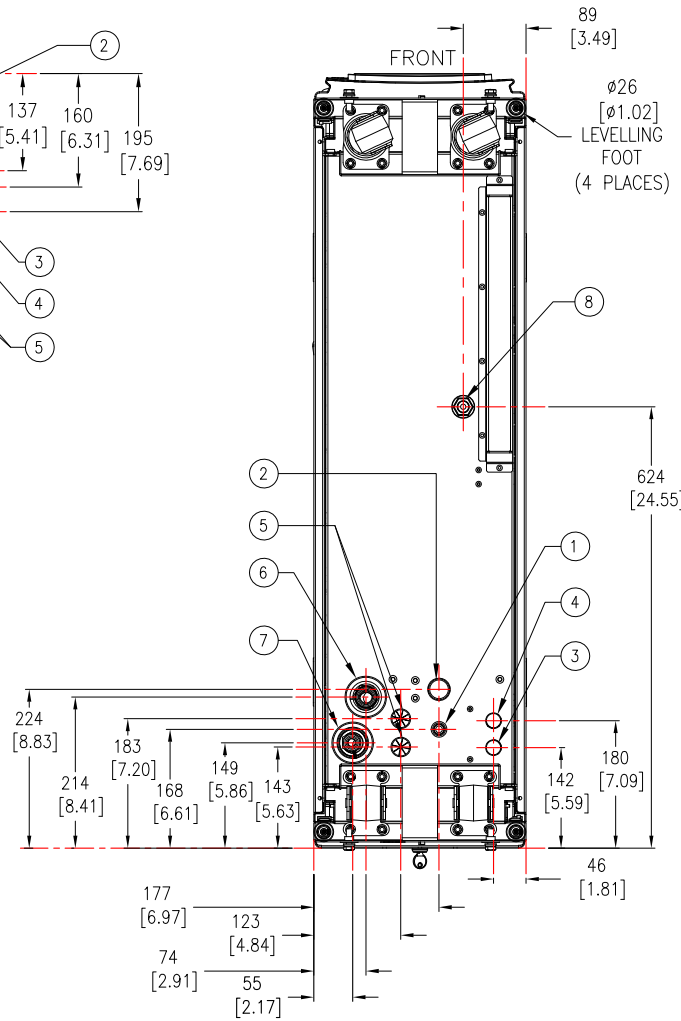
PROJECT: SUBMITTAL DRAWINGS SHEET 1 OF 6

DWG NO: ACRD301P
DRAWN: DIBYA/JAYAPRAKASH 23-AUG-24
ENGINEER: XUXIANG ZHANG 28-AUG-24
APPROVED: RAAM/WILLY 28-AUG-24

REV. 1
FIRST ANGLE PROJECTION

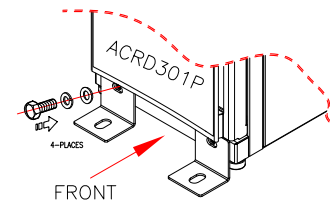


1. CONDENSATE DRAIN LINE OUTLET
2. HUMIDIFIER WATER SUPPLY INLET CONNECTION (1/4 INCH NPT OR 1/4 INCH BSPT)
3. POWER SUPPLY 1 INLET
4. POWER SUPPLY 2 INLET
5. LOW VOLTAGE INPUT WIRING INLETS
6. SUCTION LINE CONNECTION- 1 1/4 INCH (12 UNF)
7. LIQUID LINE CONNECTION- 1 INCH (14 UNS)
8. GRAVITY DRAIN CONNECTION

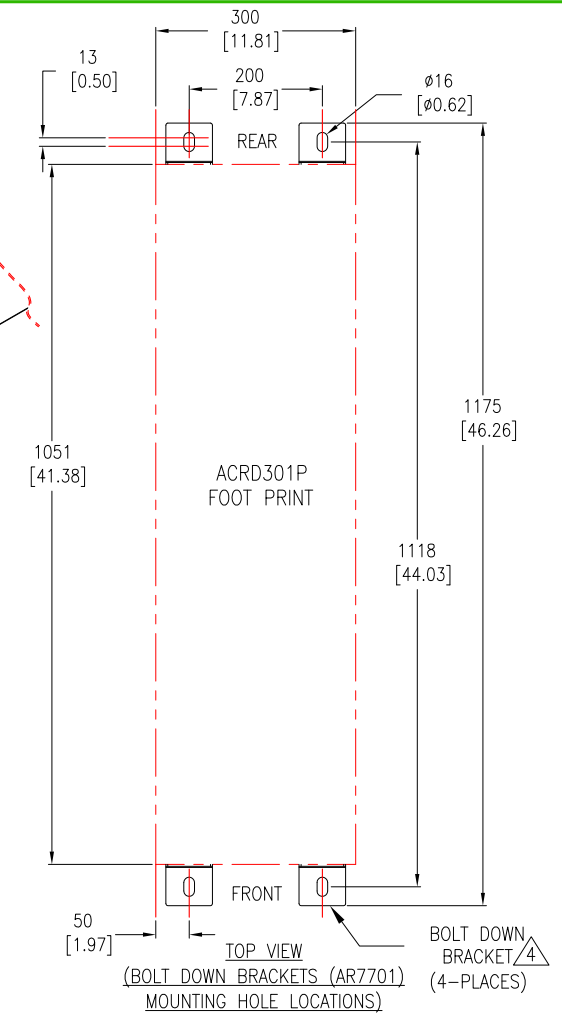


TOP VIEW

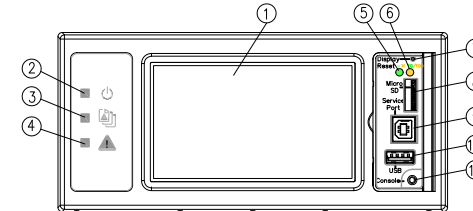
BOTTOM VIEW



IT IS NOT
RECOMMENDED TO
PRE-DRILL HOLES
BEFORE
PLACING RC UNITS
IN ROW.



DISPLAY INTERFACE (ENLARGED VIEW)



- | | | |
|------------------|-------------------------------------|-------------------------------|
| 1. LCD DISPLAY | 6. DISPLAY RESET BUTTON | 9. SERVICE PORT |
| 2. POWER LED | 7. LINK-RX/TX(1% ₀₀)LED | 10. USB-A PORT |
| 3. CHECK LOG LED | 8. MICRO SD CARD SLOT | 11. SERIAL CONFIGURATION PORT |
| 4. ALARM LED | | |
| 5. STATUS LED | | |

NOTES:

1. INSTALLATION SHALL COMPLY WITH ALL APPLICABLE NATIONAL, STATE AND LOCAL ELECTRICAL STANDARDS.
2. REFER TO PRODUCT DOCUMENTATION FOR ADDITIONAL DETAILS PRIOR TO INSTALLATION AND SITE PREPARATION WORK.
3. ALL DIMENSIONS ARE IN MILLIMETERS [INCHES].
- △4. BOLT-DOWN KIT (SKU#AR7701) IS OPTIONAL AND HAS TO BE ORDERED SEPARATELY.

THIS DRAWING AND SPECIFICATIONS HEREIN ARE THE PROPERTY OF SCHNEIDER ELECTRIC AND SHALL NOT BE COPIED, REPRODUCED OR USED IN WHOLE OR IN PART, AS THE BASIS FOR THE MANUFACTURE OR SALE OF ITEMS WITHOUT WRITTEN PERMISSION FROM SCHNEIDER ELECTRIC. THIS DRAWING IS BASED UPON LATEST AVAILABLE INFORMATION AND IS SUBJECT TO CHANGE WITHOUT NOTICE.

Schneider Electric

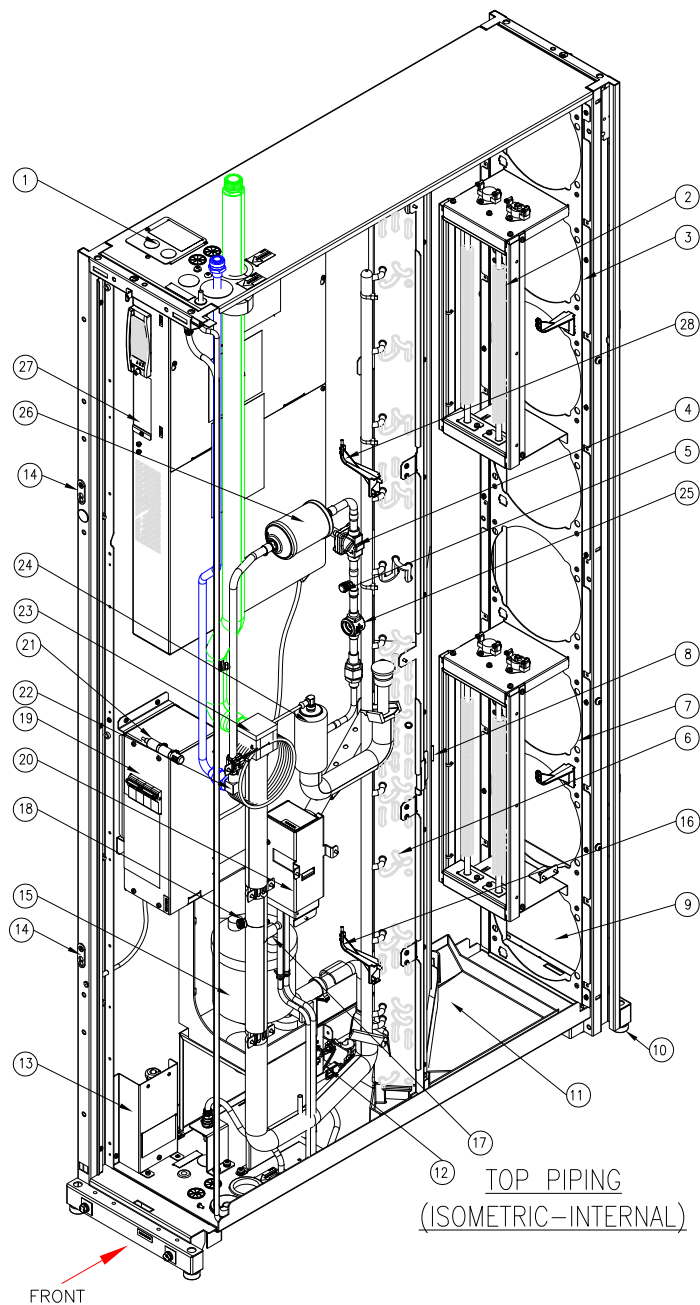
TITLE: InRow DIRECT EXPANSION
InRow RD 300mm 30kW Indoor Unit
DUAL FEED 208-230V, w/HUMIDIFIER & REHEAT CE/UL
TOP-BOTTOM VIEWS AND ANCHORING DETAILS

PROJECT: SUBMITTAL DRAWINGS SHEET 2 OF 6

DWG NO: AC RD 301P

DRAWN: BALA	23-OCT-20
ENGINEER: RAAM C/K CHENG	23-OCT-20
APPROVED: RAAM C/K CHENG	23-OCT-20

REV: 0
FIRST ANGLE PROJECTION



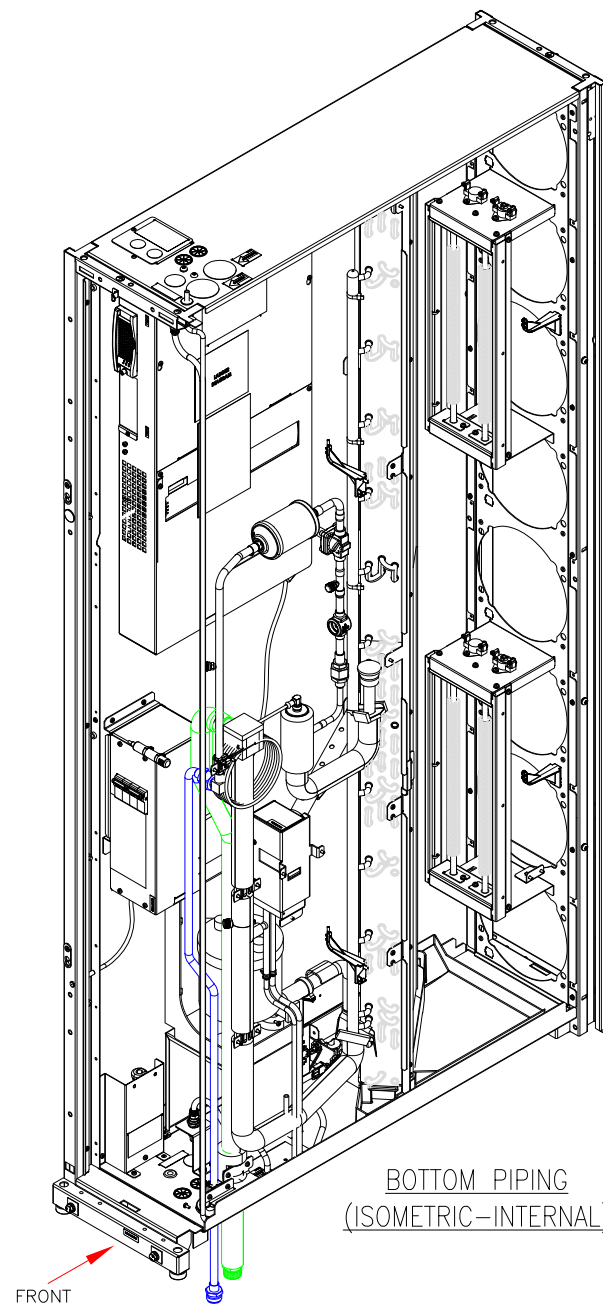
1. POWER SUPPLY CONNECTIONS (TOP)
2. ELECTRIC HEATERS
3. UPPER SUPPLY AIR TEMPERATURE SENSOR
(ATTACHED TO FAN GRILLE)
4. SOLENOID VALVE
5. LIQUID LINE SERVICE PORT
6. COOLING COIL
7. LOWER SUPPLY AIR TEMPERATURE
(ATTACHED TO FAN GRILLE)
8. REFRIGERANT TEMPERATURE SENSOR
9. FAN LOCATION (TYPICAL)
10. LEVELING FEET
11. CONDENSATE DRAIN PAN
12. DRAIN PAN FLOAT SWITCH
13. POWER SUPPLY CONNECTION (LOWER)
14. JOINING BRACKET
15. HUMIDIFIER
16. LOWER RETURN AIR TEMPERATURE SENSOR
17. TEMPERATURE SENSOR (SUCTION)
18. GAS LINE SERVICE PORT
19. AUTOMATIC TRANSFER SWITCH (ATS)
20. CONDENSATE DRAIN PUMP
21. TEMPERATURE AND HUMIDITY SENSOR
22. INLET CONNECTION
23. OUTLET CONNECTION
24. ELECTRONIC EXPANSION VALVE (EEV)
25. SIGHT GLASS
26. FILTER DRIER
27. ELECTRICAL BOX
28. UPPER RETURN AIR TEMPERATURE SENSOR



SUCTION LINE
(WITH INSULATION)



LIQUID LINE



NOTES:

1. INSTALLATION SHALL COMPLY WITH ALL APPLICABLE NATIONAL, STATE AND LOCAL ELECTRICAL STANDARDS.
2. REFER TO PRODUCT DOCUMENTATION FOR ADDITIONAL DETAILS PRIOR TO INSTALLATION AND SITE PREPARATION WORK.
3. ALL DIMENSIONS ARE IN MILLIMETERS [INCHES].
4. SOME STRUCTURAL DETAILS BEEN OMITTED FOR THE PURPOSE OF CLARITY.

THIS DRAWING AND SPECIFICATIONS HEREIN ARE THE PROPERTY OF SCHNEIDER ELECTRIC AND SHALL NOT BE COPIED, REPRODUCED OR USED IN WHOLE OR IN PART, AS THE BASIS FOR THE MANUFACTURE OR SALE OF ITEMS WITHOUT WRITTEN PERMISSION FROM SCHNEIDER ELECTRIC. THIS DRAWING IS BASED UPON LATEST AVAILABLE INFORMATION AND IS SUBJECT TO CHANGE WITHOUT NOTICE.

Schneider Electric

TITLE: InRow DIRECT EXPANSION
InRow RD 300mm 30kW Indoor Unit
DUAL FEED 208-230V, w/HUMIDIFIER & REHEAT CE/UL
INTERNAL ISOMETRIC VIEWS

DWG NO: ACRD301P

REV: 0

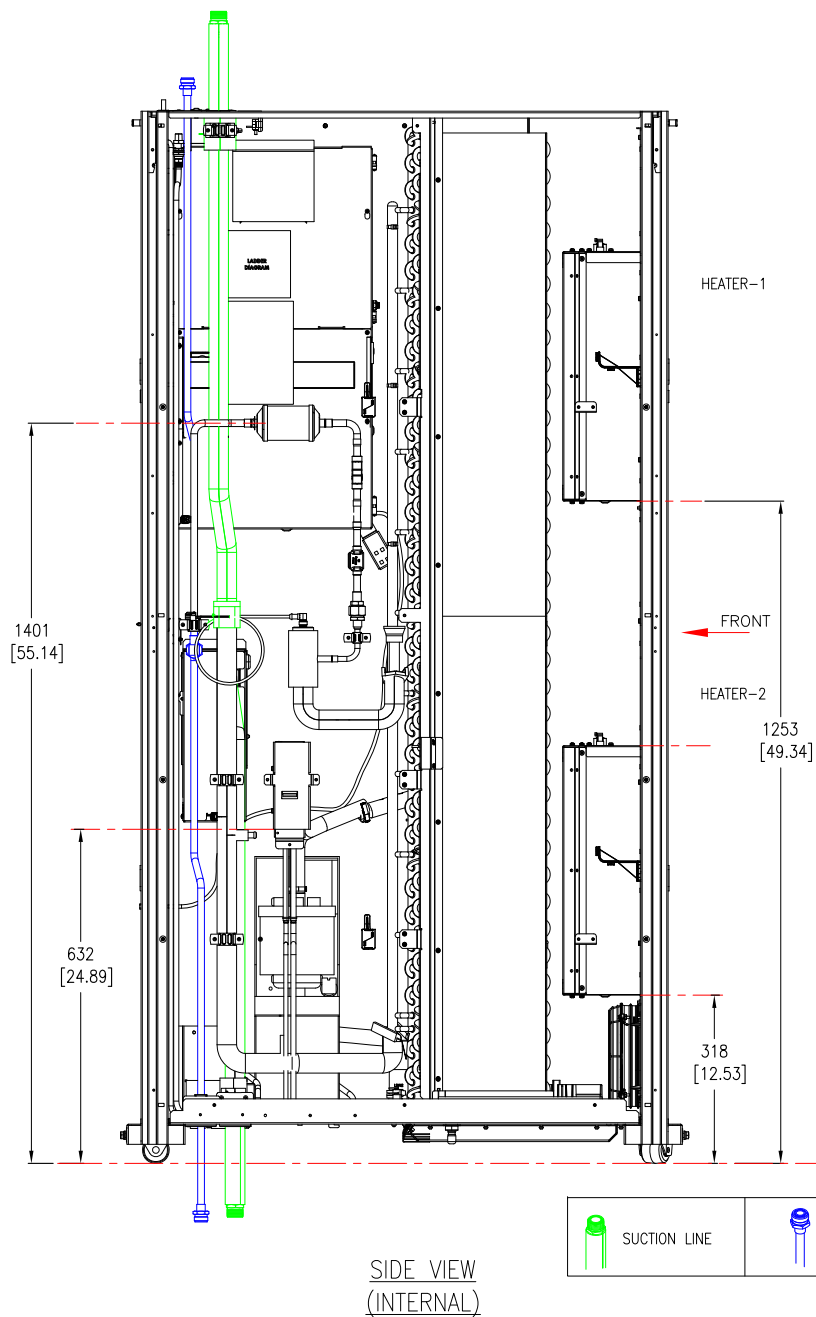
DRAWN: BALA 29-SEP-20

ENGINEER: RAAM C/K CHENG 15-OCT-20

APPROVED: RAAM C/K CHENG 15-OCT-20

FIRST
ANGLE
PROJECTION

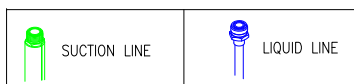
PROJECT: SUBMITTAL DRAWINGS SHEET 3 OF 6



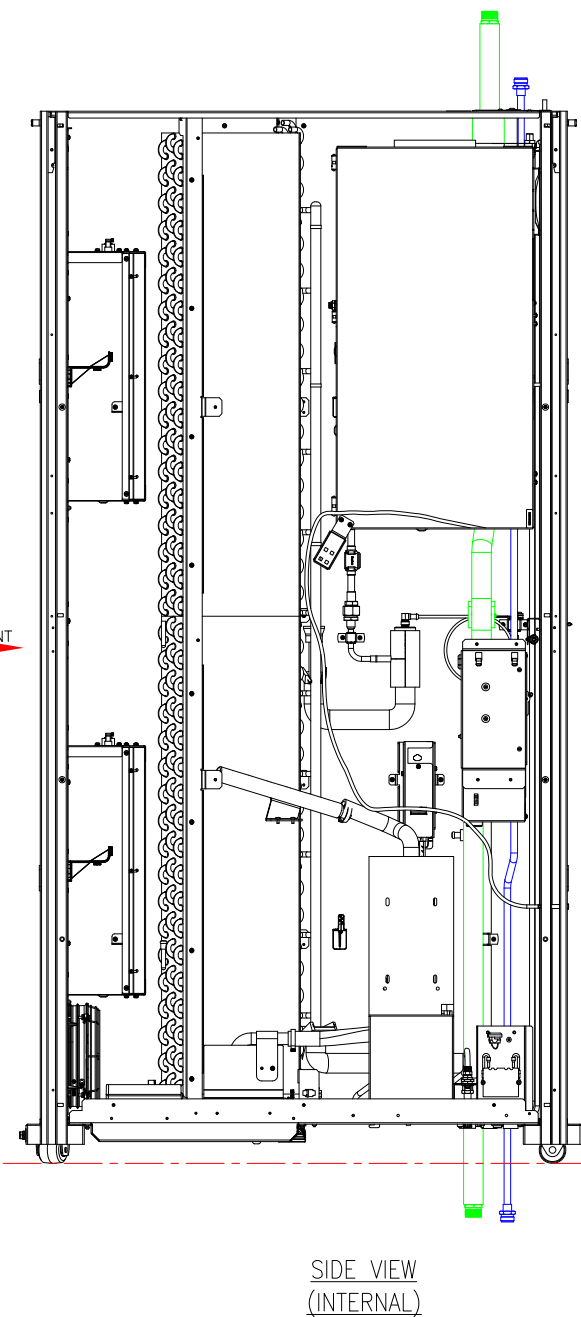
ELECTRICAL BOX
(REFER TO
DETAIL-A
SHEET-5)

ATS
(REFER TO
DETAIL-B
SHEET-5)

HUMIDIFIER



REAR VIEW
(INTERNAL)



NOTES:

1. INSTALLATION SHALL COMPLY WITH ALL APPLICABLE NATIONAL, STATE AND LOCAL ELECTRICAL STANDARDS.
2. REFER TO PRODUCT DOCUMENTATION FOR ADDITIONAL DETAILS PRIOR TO INSTALLATION AND SITE PREPARATION WORK.
3. ALL DIMENSIONS ARE IN MILLIMETERS [INCHES].
4. SUCTION PIPE SHOWN WITH INSULATION IN THIS SHEET.
5. SOME STRUCTURAL DETAILS BEEN OMITTED FOR THE PURPOSE OF CLARITY.

THIS DRAWING AND SPECIFICATIONS HEREIN ARE THE PROPERTY OF SCHNEIDER ELECTRIC AND SHALL NOT BE COPIED, REPRODUCED OR USED IN WHOLE OR IN PART, AS THE BASIS FOR THE MANUFACTURE OR SALE OF ITEMS WITHOUT WRITTEN PERMISSION FROM SCHNEIDER ELECTRIC. THIS DRAWING IS BASED UPON LATEST AVAILABLE INFORMATION AND IS SUBJECT TO CHANGE WITHOUT NOTICE.

Schneider Electric

TITLE: InRow DIRECT EXPANSION
InRow RD 300mm 30kW Indoor Unit
DUAL FEED 208-230V, w/HUMIDIFIER & REHEAT CE/UL
INTERNAL VIEWS

DWG NO: ACRD301P

REV: 0

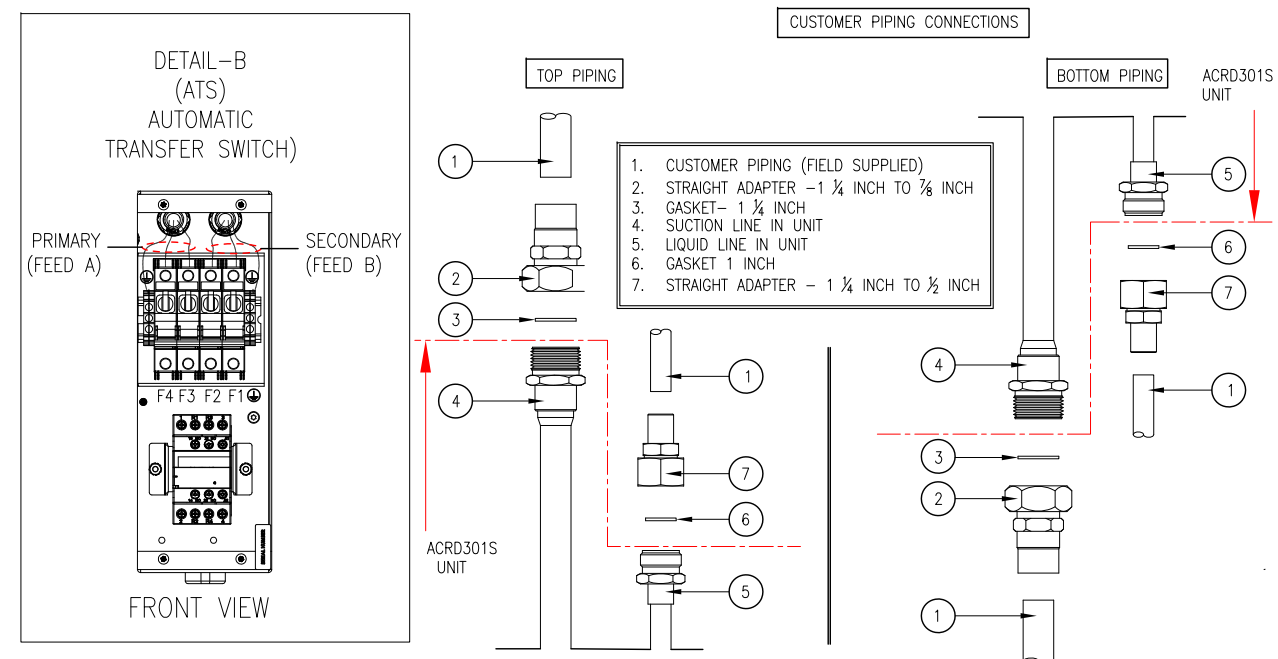
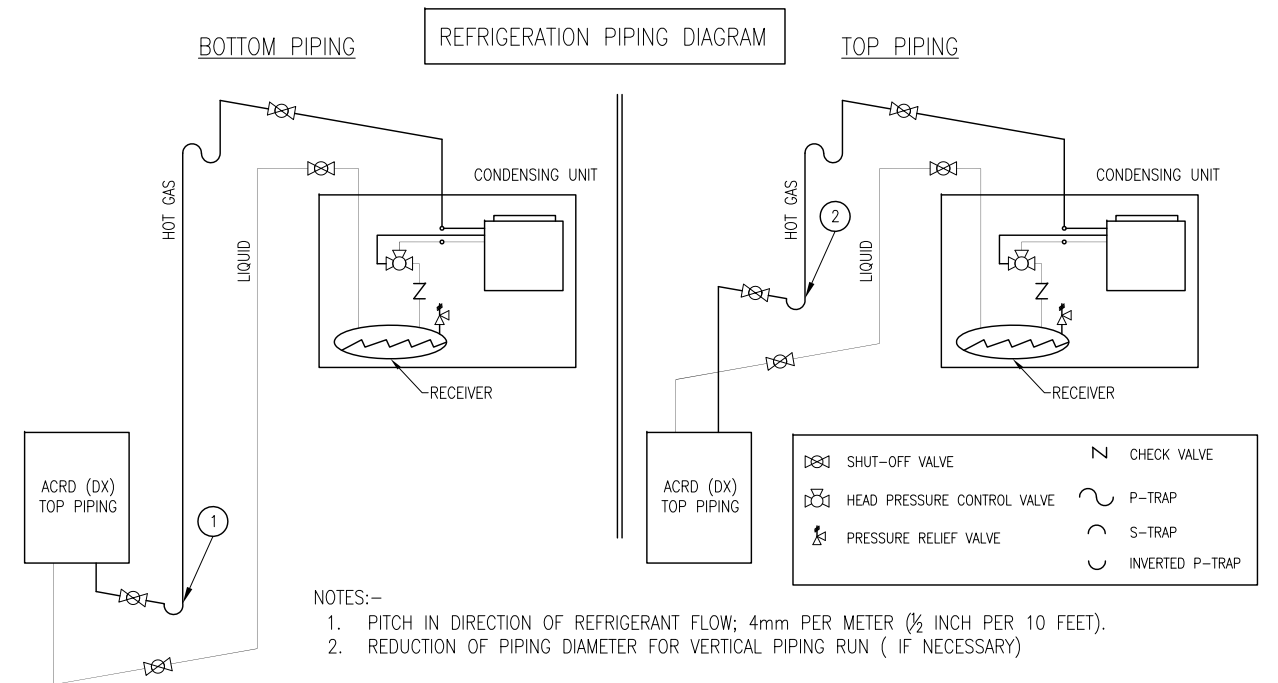
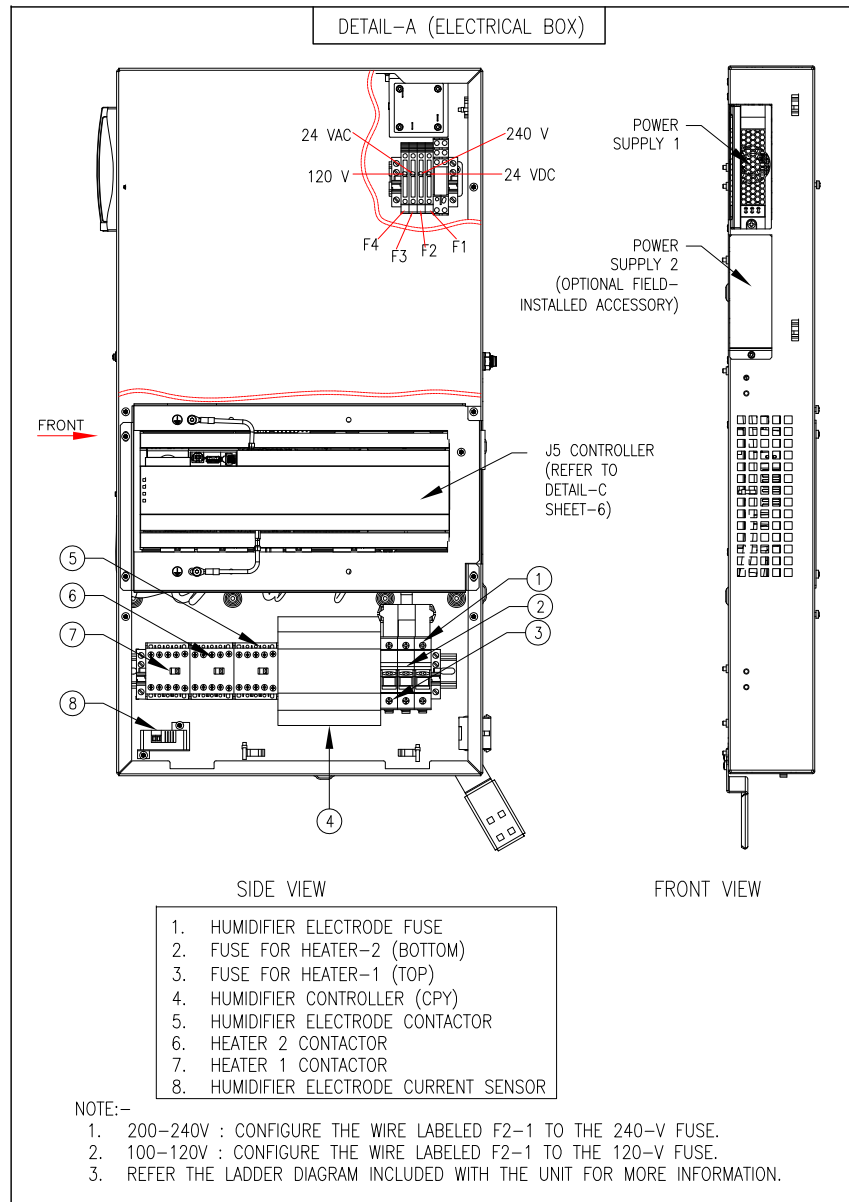
DRAWN: BALA 29-SEP-20

ENGINEER: RAAM C/K CHENG 15-OCT-20

APPROVED: RAAM C/K CHENG 15-OCT-20

PROJECT: SUBMITTAL DRAWINGS SHEET 4 OF 6

FIRST
ANGLE
PROJECTION



COMMON NOTES:

1. INSTALLATION SHALL COMPLY WITH ALL APPLICABLE NATIONAL, STATE AND LOCAL ELECTRICAL STANDARDS.
2. REFER TO PRODUCT DOCUMENTATION FOR ADDITIONAL DETAILS PRIOR TO INSTALLATION AND SITE PREPARATION WORK.
3. SOME STRUCTURAL DETAILS BEEN OMITTED FOR THE PURPOSE OF CLARITY.

THIS DRAWING AND SPECIFICATIONS HEREIN ARE THE PROPERTY OF SCHNEIDER ELECTRIC AND SHALL NOT BE COPIED, REPRODUCED OR USED IN WHOLE OR IN PART, AS THE BASIS FOR THE MANUFACTURE OR SALE OF ITEMS WITHOUT WRITTEN PERMISSION FROM SCHNEIDER ELECTRIC. THIS DRAWING IS BASED UPON LATEST AVAILABLE INFORMATION AND IS SUBJECT TO CHANGE WITHOUT NOTICE.

Schneider Electric

TITLE: InRow DIRECT EXPANSION
InRow RD 300mm 30kW Indoor Unit
DUAL FEED 208-230V, w/HUMIDIFIER & REHEAT CE/UL
INTERNAL DETAILS AND
REFRIGERATION PIPING DIAGRAM

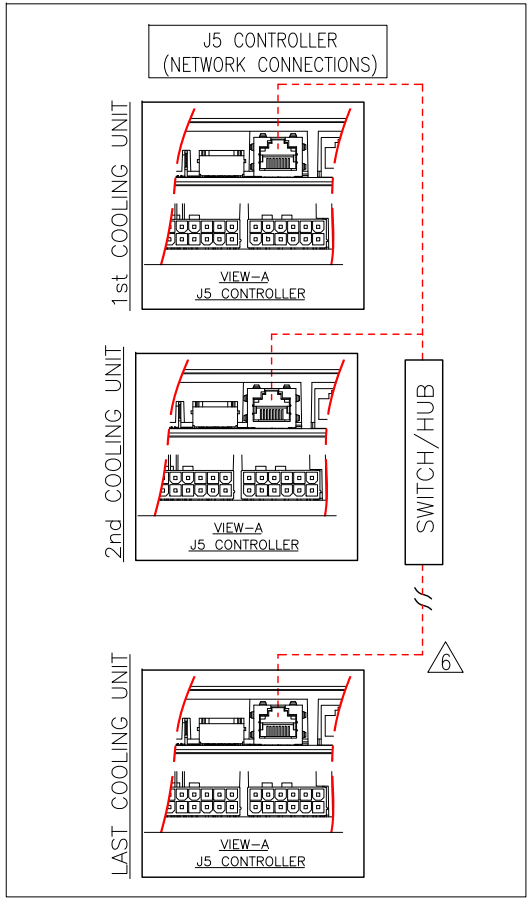
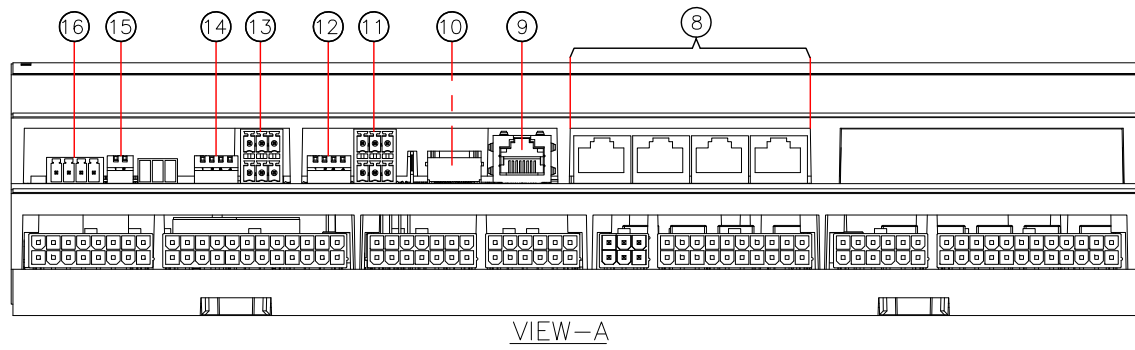
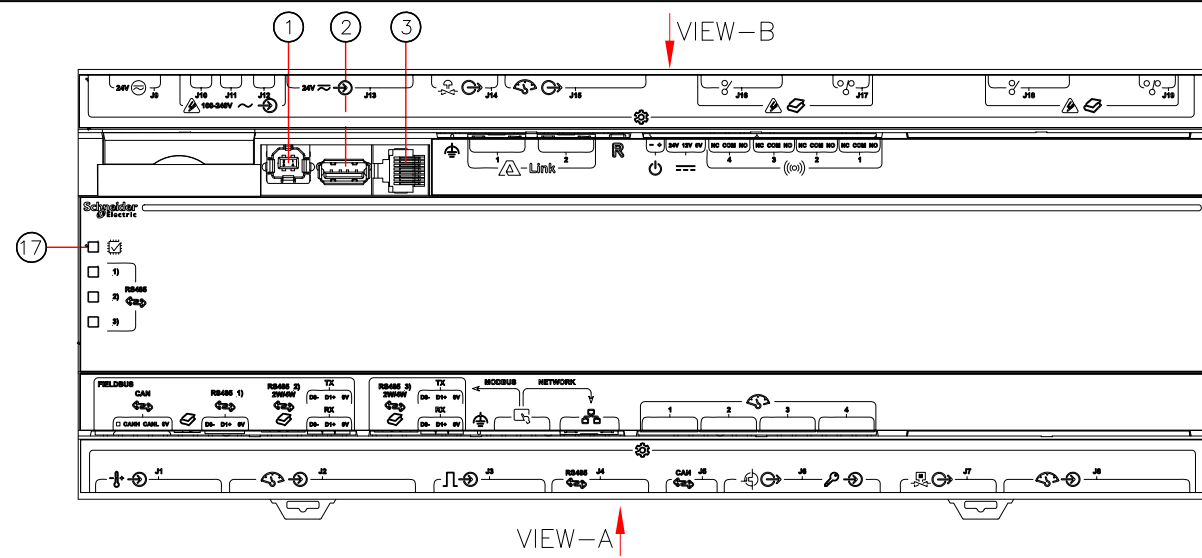
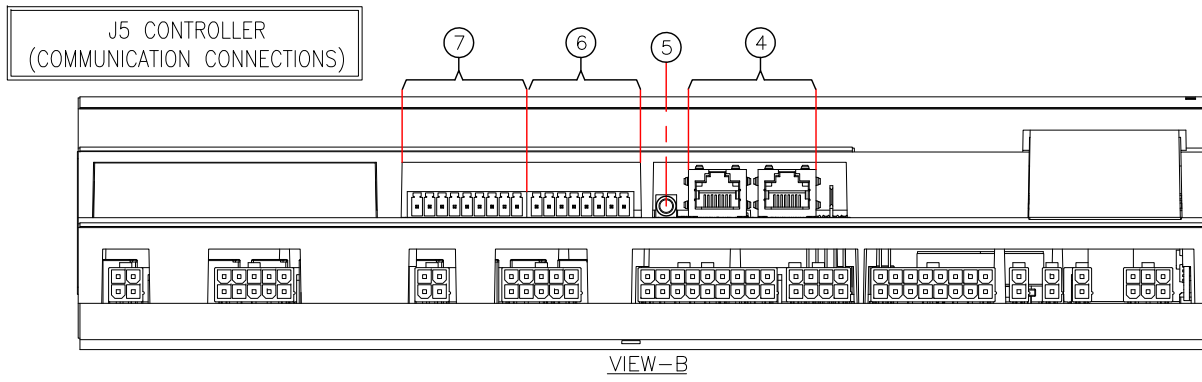
PROJECT: SUBMITTAL DRAWINGS **SHEET 5 OF 6**

DWG NO: ACRD301P **REV.** 0

DRAWN: BALA **29-SEP-20** **FIRST ANGLE**

ENGINEER: RAAM C/K CHENG **15-OCT-20** **PROJECTION**

APPROVED: RAAM C/K CHENG **15-OCT-20**



1. USB DEVICE PORT
2. USB HOST PORT
3. SERIAL PORT
4. A-LINK PORTS
5. RESET BUTTON
6. OUTPUT RELAY 4/STANDBY INPUT
7. OUTPUT RELAY 1-3
8. UNIVERSAL SENSOR PARTS
9. NETWORK CONNECTION
10. TOUCH SCREEN DISPLAY CONNECTION
11. MODBUS CONNECTION
12. MODBUS CONFIGURATION SWITCHES
13. FIELDBUS MODBUS CONNECTION
14. FIELDBUS MODBUS CONFIGURATION SWITCHES
15. FIELDBUS CANbus CONFIGURATION SWITCHES
16. FIELDBUS CANbus CONNECTION
17. PROCESSOR STATUS LED

- NOTES:**
1. INSTALLATION SHALL COMPLY WITH ALL APPLICABLE NATIONAL, STATE AND LOCAL ELECTRICAL STANDARDS.
 2. REFER TO PRODUCT DOCUMENTATION FOR ADDITIONAL DETAILS PRIOR TO INSTALLATION AND SITE PREPARATION WORK.
 3. FOR OUTPUT RELAY DETAILS, MODBUS SWITCH CONFIGURATIONS AND STANDBY INPUTS DETAILS, REFER TO INSTALLATION MANUAL.
 4. THE A-LINK BUS CONNECTION ALLOWS A MAXIMUM GROUP OF 20 UNIFLIR InRow ACRD301P UNITS.
 5. TO ENABLE UNITS TO FUNCTION AS A GROUP, LINK THEM TOGETHER USING A STANDARD PIN-OUT CAT-5 CABLE WITH RJ-45 CONNECTORS. THE A-LINK BUS MUST BE TERMINATED AT THE 1st AND LAST UNIT INSTALLED IN THE GROUP. AN A-LINK TERMINATOR IS SUPPLIED WITH EACH UNIT.
 - △ 6. THE MAXIMUM WIRE LENGTH FOR THE ENTIRE GROUP MUST NOT EXCEED 500 METERS (1640 FEET).
 7. ALL INPUT AND OUTPUT CONNECTIONS SHOULD BE WIRED AS CLASS 2 CIRCUITS.

THIS DRAWING AND SPECIFICATIONS HEREIN ARE THE PROPERTY OF SCHNEIDER ELECTRIC AND SHALL NOT BE COPIED, REPRODUCED OR USED IN WHOLE OR IN PART, AS THE BASIS FOR THE MANUFACTURE OR SALE OF ITEMS WITHOUT WRITTEN PERMISSION FROM SCHNEIDER ELECTRIC. THIS DRAWING IS BASED UPON LATEST AVAILABLE INFORMATION AND IS SUBJECT TO CHANGE WITHOUT NOTICE.



TITLE: InRow DIRECT EXPANSION
InRow RD 300mm 30kW Indoor Unit
DUAL FEED 208-230V, w/HUMIDIFIER & REHEAT CE/UL
COMMUNICATION DETAILS

PROJECT: SUBMITTAL DRAWINGS

SHEET 6 OF 6

DWG NO: ACRD301P

DRAWN: BALA 29-SEP-20

ENGINEER: RAAM C/K CHENG 15-OCT-20

APPROVED: RAAM C/K CHENG 15-OCT-20

REV: 0

FIRST ANGLE PROJECTION